



EPAC's goal is to give each individual the chance to understand the creativity and satisfaction of movement. By creating multiple paths for students we will help shape well rounded performers and individuals. The welcoming atmosphere we provide will help children feel they can be themselves. We hope to create inspiration, memories, and life long lessons for your children. By creating hope, we find it is possible to "rise to your summit"!

Rise to your summit

## Week 3 at Eleve'!

### Gertens!

Fundraising information packet are at the front desk!

**Announcing Eleve's  
1st Annual Golf  
Fundraiser!**

**Cancelled...**

**we were not able to get  
enough participants  
this year.**



*We love  
Eleve'*

## COMPETITION CORNER

A test email will be sent out to all those who have signed up to our private Eleve' Login! Please be sure to respond if it worked for you!



## Disney Families-

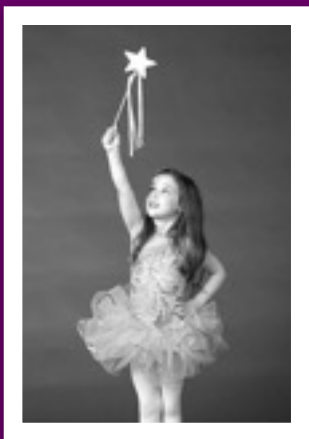
We are so excited to get started on our fun adventure to Disney World!

Note: Your deposit fees will be added to your accounts.

## Shoe Orders

Erin Stuart will be taking shoe orders this next week for those who missed the first order.

Please email her at [petabode@yahoo.com](mailto:petabode@yahoo.com) to set up a time for a fitting!



## ELEVE' APPAREL ORDER

Order your Eleve' Wear Today!

The store will be up for 2 weeks so be sure to check it out!

[Shop Here!](#)

\*Note- Competition Dancers are required to have the purple team jacket for awards!



*Mark Your Calendars!*

## FUNDRAISER CALENDAR

**September- Gertens**

**October- Golf Tournament  
(Studio Fundraiser)**

**November- Butterbraids**

**November- Heggies**

**December- Winter Show Silent Auction  
(Studio Fundraiser)**

**January- Dance- A- Then**

**March- Heggies**

- **October 27th Halloween Party**
- **October 31st- Halloween- NO Dance**
- **Thanksgiving Break Nov. 22nd-25th**
- **In Studio Rehearsal- Dec. 2nd  
(winter show)**
- **Winter Show- Polar Express Dec 8th!  
@ Masonic Heritage Theater, Bloomington,  
MN**



# Polar Express Tickets!

Presenting Eleve' Performing Arts Center's First Full Mini Musical!

## POLAR EXPRESS

All Eleve' Show Ticketing will be done through the Masonic Heritage Box Office.

Seats are Reserved Seating So Don't Wait To Long To Purchase Tickets!

Tickets are on Sale Now!!

[BUY TICKETS HERE](#)

### Reminder NUT FREE!

Just a friendly reminder

that we are a nut free

facility! Please be sure

to check all snacks and

dinners that are sent to

the studio!



Eleve' Performing Arts  
Center

10824 Normandale Blvd.  
Bloomington, MN

[www.elevepac.com](http://www.elevepac.com)

Phone: 952-300-0856